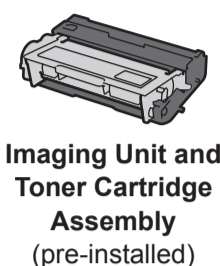
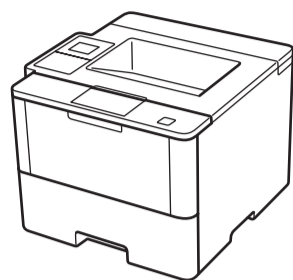


ineo 5000i ineo 4000i

Installation

Read the Safety Information first, then read this Installation for the correct installation procedure.

Unpack the machine and check the components



NOTE:

- The included components vary depending on the country or region.
- You must purchase the correct interface cable for the interface you want to use.

USB cable

We recommend using a USB 2.0 cable (Type A/B) that is no more than 6 feet (2 meters) long.

Network cable

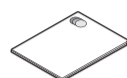
Use a straight-through Category 5 (or greater) twisted-pair cable.



CD-ROMs

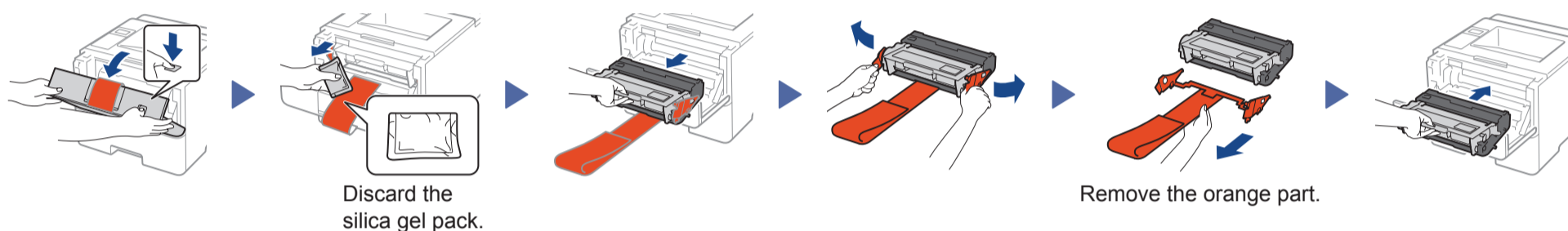


Installation

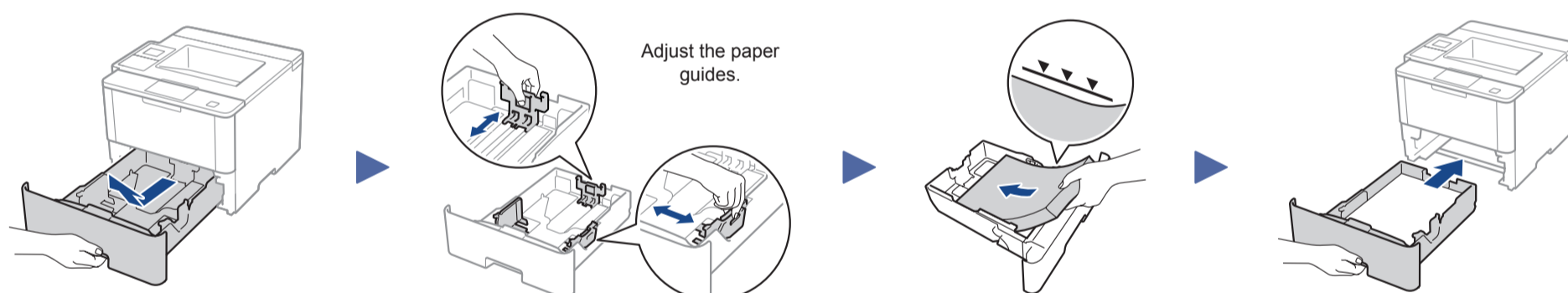


Safety Information

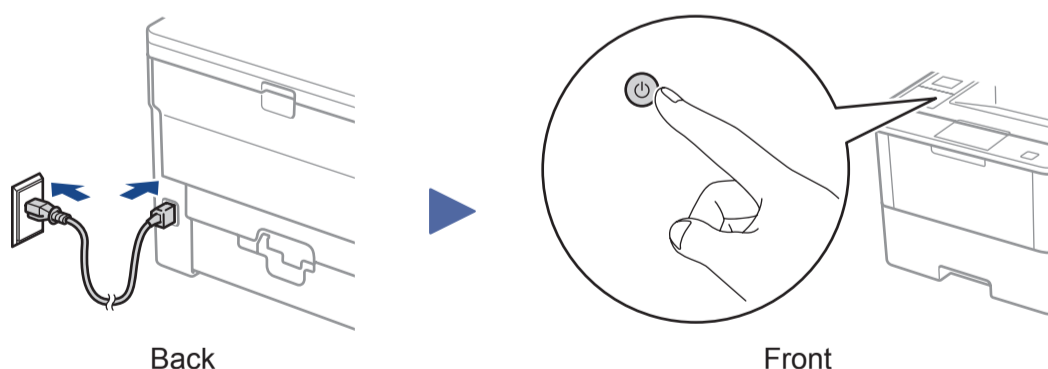
1 Remove the packing materials and install the imaging unit and toner cartridge assembly



2 Load paper in the paper tray



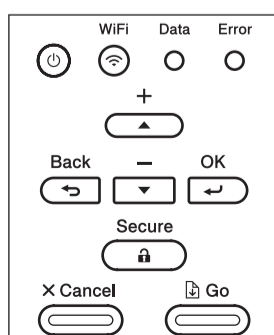
3 Connect the power cord and turn on the machine



4 Select your language (if needed)

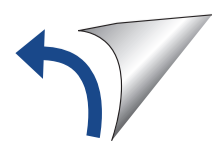
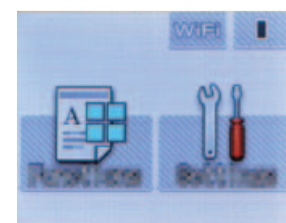
■ For LCD model

1. Press ▼ or ▲ to select [General Setup], and then press **OK**.
2. Press **OK** to select [Local Language].
3. Press ▼ or ▲ to select your language, and then press **OK**.
4. Press **Cancel**.



■ For Touchscreen model

1. On the machine's Touchscreen, press [Settings] > [General Setup] > [Local Language].
2. Press your language.
3. Press





Alternate wireless configuration method (Setup Wizard)

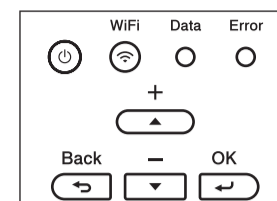
If you are not using a wireless network connection, go to step 5.
Restart your wireless access point/router.



If you cannot find this information, ask your network administrator or wireless access point/router manufacturer.

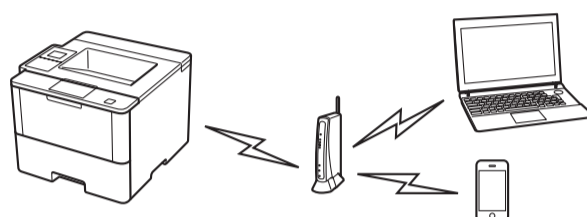
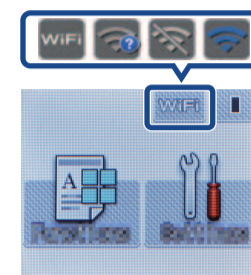
■ For LCD model

- Press **▲** or **▼** to select the [Network] option, and then press **OK**.
- Press **▲** or **▼** to select the [WLAN] option, and then press **OK**.
- Press **▲** or **▼** to select the [Setup Wizard] option, and then press **OK**.
- When [WLAN Enable?] appears, press **▲** to select [On].



■ For Touchscreen model

Press **WiFi** > [Setup Wizard] > [Yes].



Select the SSID.
Enter the Network key.

The LCD displays
[Connected.].

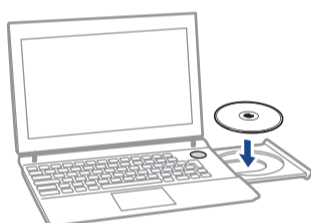
Finish

NOTE:

For information on how to enter text, see the *Quick Guide*.

5 Installing the printer driver

■ For Windows users

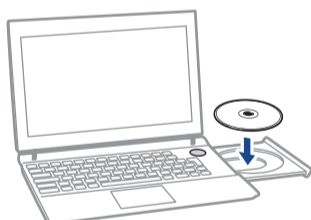


Put the Drivers CD into your CD drive.

Follow the on-screen instructions to continue installation.

Finish

■ For Macintosh users



Put the Drivers CD into your CD drive.

Open the folder on the CD-ROM that contains the desired printer driver.
→ Select the folder according to the printer driver, operating system, and language to be used.
→ Navigate to : **Driver** > **MacOSX** > **OS_10_10_x**

Copy the driver file onto the desktop.
→ The driver folder varies depending on the required size. Select the file according to your environment.
To mainly use the metric-based paper size such as A4 size :
Japanese : "JP_A4" folder.
Other than Japanese : "WW_A4" folder.
To mainly use the inch-based paper size such as 8 1/2 x 11: "WW_Letter" folder.

Double-click the file copied onto the desktop.
The printer driver installer starts.

Click **Continue**, following the instructions on the pages that follow until the **Install page** appears.

Click **Install**.
→ When the name and password prompt appears during the procedure, enter the Administrator name and password.

Finish



Cannot set up your machine?



Wired network



USB



Wireless network

Disconnect the cable.

Restart your machine, computer and/or mobile device.



Repeat 5.

Go to **WiFi** Alternate wireless configuration method (Setup Wizard).